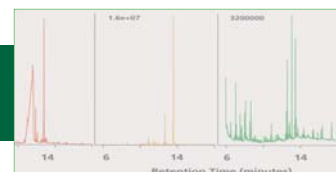


2009 Editorial Calendar



| Issue | January/ February | March/ April | May/ June | July/ August | September/ October | November/ December |
|----------------------------|--|---|---|---|--|---|
| Closing Date | December 29, 2008 | February 25, 2009 | April 27, 2009 | June 29, 2009 | August 31, 2009 | October 28, 2009 |
| Editorial Coverage | <ul style="list-style-type: none"> • Capillary Electrophoresis • Chiral Chromatography • Chromatography in Forensics • HILIC • LC Columns • Process Chromatography • Sample Preparation • New Products | <ul style="list-style-type: none"> • GC Columns • GC-FTIR • Ion Chromatography • LC-MS Systems • Nano LC • Ovens • New Products | <ul style="list-style-type: none"> • GC-MS • GCxGC (2-D GC) • Method Development • Reversed-Phase HPLC • Supercritical Fluid Chromatography (SFC) • Thin-Layer Chromatography (TLC) • New Products | <ul style="list-style-type: none"> • Capillary Electrophoresis • Chromatography Service and Support • Fast LC • High-Speed GC • Isocratic Chromatography • Thermal Desorption • New Products | <ul style="list-style-type: none"> • GC Safety • Gel Permeation Chromatography (GPC) • LC Columns • LC-MS • Method Validation • Solid-Phase Microextraction (SPME) GC-MS • Supercritical Fluid Chromatography (SFC) • New Products | <ul style="list-style-type: none"> • Chromatography Detectors • Chromatography Software • GC and Time-of-Flight (TOF)-MS • GC-MS Systems • HPLC Systems • Size-Exclusion Chromatography (SEC) • New Products |
| Trade Show Coverage | American Academy of Forensics Denver, CO February 16-21 | <ul style="list-style-type: none"> • Pittcon Chicago, IL March 8-13 • INTERPHEX New York, NY March 17-19 • ACS Salt Lake City, UT March 22-26 • AIChE Tampa, FL April 26-30 | HPLC Dresden, Germany June 28-July 2 | ACS Washington, DC August 16-20 | SFC 2009 Date and Location TBD | Eastern Analytical Symposium Somerset, NJ November 16-19 |

Note: Editorial subject to change due to market demand.

| 2009 E-newsletter Calendar | | | | | | |
|----------------------------|-------------|----------|---------|-----------|--------------|-------------|
| CT Express | January 21 | March 18 | May 20 | July 22 | September 23 | November 18 |
| CT Advance | February 4 | April 1 | June 3 | August 5 | September 30 | December 2 |
| E-Showcase | February 11 | April 15 | June 10 | August 12 | October 7 | December 9 |

Note: Newsletter schedules may vary due to production workflows.